

CATALOG VOL. 26

Stainless Steel Veterinary Equipment





Since 1986, TriStar has manufactured equipment from our facility in North Texas. Like you, we've experienced the highs and lows of operating a small business. Our pledge is to give you the most for your money, excellent customer service and if anything goes wrong, make it right. Period.

“ Everything looks great, is of high quality, and fits perfectly in each space it was intended for. You should be proud of what you do and the service you provide; we will recommend TriStar to all our referring hospitals whenever they need equipment like ours. Again, sincere thanks. ”

– **Christopher Kovach, CVT**

“ We are building a new clinic and have had to work with many suppliers. Your service has been head and shoulders above the others. I wish all companies operated at your level. ”

– **Dr. Eric Stone**

“ Everything is top quality and well designed. ”

– **Dr. Coghlan**

“ Products arrived well packaged & without any damage. All are finally installed & I am very pleased with the quality of the workmanship & the design. ”

– **G. Bertram, DVM**

“ One of the best qualities TriStar has is their ability to customize in any situation. Our first clinic was older and in need of updating. TriStar was able to meet those needs with custom cages and quality stainless steel gates and panels in the boarding area. When we decided to build our new facility, TriStar was in on the ground floor of our building process from custom cabinetry in the surgery and food prep areas, exam room lift tables, walk-up bathing tubs, surgery and grooming tables, and fully customized boarding suites. I think we have one of everything they make, and we know it's built to last! ”

– **Dr. Sheila Jordan**

***A note about pricing: Our catalogs are printed annually. The cost of stainless steel fluctuates monthly. We can offer the best pricing by providing individual estimates for our customers based on their respective equipment needs.**

TREATMENT 4

Wood Grain, Wet (Water-Flo, Non Water-Flo), Drop In Tub, Dry

SINKS 13

Scrub, Fecal, Kennel Prep

TABLES 16

Wall Mount, Exam, Transport/Lift, Surgery, Utility & Mobile, Grooming

CABINETS/CASEWORK 23

Medical, Upper, Lower

WORK ISLANDS 29

GROOMING TUBS 34

Tubs, Grates

KENNELS 38

Doors, Side Panels, Back Panels, Guillotine, Raised, Accessories

CAT CONDOS 45

Powder Coated, Stainless Steel, Luxury Cat Runs

CAGES 48

Recovery, Isolation, Parvo

FAUCETS & SCALES 53

CORNER GUARDS & KICK PLATES 58

TREATMENT



“ Everything looks great, is of high quality, and fits perfectly in each space it was intended for. You should be proud of what you do and the service you provide; we will recommend TriStar to all our referring hospitals whenever they need equipment like ours. Again, sincere thanks.”

– Christopher Kovach, CVT

Design an area that fits your needs.

When customizing your treatment and surgical areas, remember:

- TriStar has the ability to design and modify our products to meet your specifications.
- Ergonomics, configuration, placement and accessories can make your clinic much more efficient and user-friendly.
- Work areas should be comfortable and organized with work surfaces at appropriate heights for your staff.



WOOD GRAIN

TREATMENT

Our latest innovation is an all metal treatment cabinet that is powder coated to look like natural wood. Unlike wood laminate, it's an ideal product for treatment and surgery rooms where non-porous, very durable equipment is needed.



Available in 5 distinctive finishes



025



035



045



055



065



Visit our website to see video

It's all the warmth of WOOD and all the benefits of METAL.

It's built to stand the test of time. It's a game changer.

It's the TriStar Difference.



Finish looks identical to wood grain.



Pass-thru cabinet allows access to equipment from both sides.



Pass thru drawers with removable pans, ideal for storing instruments that are utilized in more than one area. Drawer pans can be quickly cleaned, sanitized and put back into place.

Water-Flo with Dental Shelf & Pass-Thru Drawer System



Clinics specializing in dentistry and their technicians have been raving about the Pass-Thru Dental Shelf & Drawer System. No longer do you have to store your dental equipment on a shelf or in a drawer. In addition, this pass-thru shelf eliminates the hassle of finding a place to store equipment, tangled wires, and most of all, cut or broken cords due to slamming them in doors and drawers. Electrical outlets and water lines are concealed inside cabinetry. Your dental machine is literally at your finger tips and ready to use. Drawers & dental shelf pull out from both sides.



#100-35DP-PT
Shown with optional faucet

- Cabinet constructed of 18 gauge type 304 stainless steel
- Radius knee space
- Recessed toe space
- Drawers pass-thru to both sides
- Removable 20" L x 12" W x 4" H stainless drawer pans
- Lift off hinges allow doors to be removed for routine cleaning
- Recessed grate guide creates an even work surface
- Stainless steel grate included
- Available in custom sizes

#100-30DP-PT 60 1/2" 2 door, 2 drawer, dental shelf
#100-35DP-PT 48" 2 door, 2 drawer, dental shelf

#100-30PT 60 1/2" 2 door, 3 drawer
#100-35PT 48" 2 door, 3 drawer



#100-30-PT
Shown with optional faucet



Shown here with dental unit



#100-45
Shown with optional faucet

One Door/ Three Drawer with Water-Flo System

- Cabinet constructed of 18 gauge type 304 stainless steel
- 16 gauge tub slopes from 3" D to 4" D at drain to provide positive drainage
- Radius knee space (right and left hand units available)
- Three 20" L x 12" W x 4" H removable stainless drawer pans
- Lift off hinges allow doors to be removed for routine cleaning
- Recessed toe space
- Stainless steel grate included
- Available in custom sizes

#100-30 60 1/2" RIGHT knee space
#100-40 60 1/2" LEFT knee space

#100-35 48" RIGHT knee space
#100-45 48" LEFT knee space

Two Door Cabinet with Water-Flo System



#100-80

- Cabinet constructed of 18 gauge type 304 stainless steel
- 16 gauge tub slopes from 3" D to 4" D at drain to provide positive drainage
- Radius knee space (right and left hand units available)
- Two door access to storage and plumbing
- Lift off hinges allow doors to be removed for routine cleaning
- Recessed toe space
- Stainless steel grate included
- Available in custom sizes

#100-70 60 1/2" RIGHT knee space	#100-75 48" RIGHT knee space
#100-80 60 1/2" LEFT knee space	#100-85 48" LEFT knee space

Open Center Knee Space Cabinet with Water-Flo System



#100-88LP
Shown with optional faucet

- Cabinet constructed of 18 gauge type 304 stainless steel
- 16 gauge tub slopes from 3" D to 4" D at drain to provide positive drainage
- Three 20" L x 12" W x 4" H removable stainless drawer pans
- Lift off hinges allow doors to be removed for routine cleaning
- Recessed toe space
- Stainless steel grate included
- Available in custom sizes

#100-88RP 60" 1 door/3 drawer, Water-Flo system with RIGHT side plumbing
#100-88LP 60" 1 door/3 drawer, Water-Flo system with LEFT side plumbing
#100-88PT 60" 2 door/3 drawer pass-thru package & Water-Flo top

Open Center Knee with Added Knee Space & Water-Flo System



#100-88LKS
Shown with optional faucet

- Cabinet constructed of 18 gauge type 304 stainless steel
- 16 gauge tub slopes from 3" D to 4" D at drain to provide positive drainage
- Radius knee space (right and left hand units available)
- Three 20" L x 12" W x 4" H removable stainless drawer pans
- Lift off hinges allow doors to be removed for routine cleaning
- Recessed toe space
- Stainless steel grate included
- Available in custom sizes

#100-88RKS 60" 1 door/3 drawer, Water-Flo system with added RIGHT knee space
#100-88LKS 60" 1 Door/3 drawer, Water-Flo system with added LEFT knee space
#100-88PT-KS 60" 2 Door/3 drawer pass-thru package & Water-Flo system with added knee space



#100-10
Shown with optional faucet

One Door/Three Drawer Cabinet with Sloping Tub

- Cabinet constructed of 18 gauge type 304 stainless steel
- 16 gauge tub slopes from 3" D to 4" D at drain to provide positive drainage
- Radius knee space (right and left hand units available)
- Three 20" L x 12" W x 4" H removable stainless drawer pans
- Lift off hinges allow doors to be removed for routine cleaning
- Recessed toe space
- Stainless steel grate included
- Available in custom sizes

#100-10 60 1/2" RIGHT knee space
 #100-15 48" RIGHT knee space
 #100-20 60 1/2" LEFT knee space
 #100-25 48" LEFT knee space



#100-60

Two Door Cabinet with Sloping Tub

- Cabinet constructed of 18 gauge type 304 stainless steel
- 16 gauge Tub slopes from 3" D to 4" D at drain to provide positive drainage
- Radius knee space (right and left hand units available)
- Two door access to storage and plumbing
- Lift off hinges allow doors to be removed for routine cleaning
- Recessed toe space
- Stainless steel grate included
- Available in custom sizes

#100-50 60 1/2" RIGHT knee space #100-55 48" RIGHT knee space
 #100-60 60 1/2" LEFT knee space #100-65 48" LEFT knee space



#100-89LP
Shown with optional faucet

Open Center Knee Space Cabinet with Sloping Tub

- Cabinet constructed of 18 gauge type 304 stainless steel
- 16 gauge tub slopes from 3" D to 4" D at drain to provide positive drainage
- Three 20" L x 12" W x 4" H removable stainless drawer pans
- Lift off hinges allow doors to be removed for routine cleaning
- Recessed toe space
- Stainless steel grate included
- Available in custom sizes

#100-89RP 60 1/2" 1 door/ 3 drawer RIGHT side plumbing
 #100-89LP 60 1/2" 1 door/ 3 drawer LEFT side plumbing
 #100-89PT 60 1/2" 2 door/ 3 drawer sloping top with pass-thru package

Open Center & Added Knee Space Cabinet with Sloping Top

#100-89LKS
Shown with optional faucet



- Cabinet constructed of 18 gauge type 304 stainless steel
- 16 gauge tub slopes from 3" D to 4" D at drain to provide positive drainage
- Radius knee space (right and left hand units available)
- Three 20" L x 12" W x 4" H removable stainless drawer pans
- Lift off hinges allow doors to be removed for routine cleaning
- Recessed toe space
- Stainless steel grate included
- Available in custom sizes

#100-89RKS 60 1/2" with ADDED RIGHT knee space

#100-89LKS 60 1/2" with ADDED LEFT knee space

#100-89PT-KS 60 1/2" 2 door/3 drawer pass-thru package, sloping top with added knee space

Two Door / 3 Drawer Pass-Thru Cabinet with Sloping Tub

#100-10PT
Shown with optional faucet



- Cabinet constructed of 18 gauge type 304 stainless steel
- 16 gauge tub slopes from 3" D to 4" D at drain to provide positive drainage
- Radius knee space (right and left hand units available)
- Three 20" L x 12" W x 4" H removable stainless drawer pans
- Lift off hinges allow doors to be removed for routine cleaning
- Recessed toe space
- Stainless steel grate included
- Available in custom sizes

#100-10PT 60 1/2" pass-thru 2 door/3 drawer sloping top

#100-15PT 48" pass-thru 2 door/3 drawer sloping top

17" Deep Split-Level Tub

#100-90



- Constructed of heavy 16 gauge type 304 stainless steel
- Recessed grate guides allow for an even and solid work surface
- 17" W x 29" L stainless steel under shelf
- 21 1/2" L x 20" W x 4" D shallow knee space
- 32" L x 20" W x 17" D deep tub space
- Available in custom sizes

#100-90 60 1/2" L x 24 3/4" W x 36" H

16" Deep Tub

#100-91
Shown with optional faucet



- Constructed of 16 gauge type 304 stainless steel
- Recessed grate guides allow your grate to set flush with top to provide an even and solid work surface
- 16 1/2" W x 32 1/4" L stainless steel under shelf
- Available in custom sizes

#100-91 60 1/2" L x 24 3/4" W x 36" H

DROP IN TUB

Standard Sloping Drop-In Tubs

- Constructed of 16 gauge type 304 stainless steel
- Tub slopes from 3" D to 4" D at drain to provide positive drainage
- Recessed grate guide allows grate to set flush with the top to provide an even and solid work surface
- 3/4" radius corners allow for a quick and easy clean-up
- Stainless steel grate included
- Available in custom sizes

#300-00 60 1/2" L x 24 3/4" W x 3" to 4" D sloping top
#300-05 48" L x 24 3/4" W x 3" to 4" D sloping top



#300-00

Water-Flo System Drop-In Tubs



Visit our website to see video

- Constructed of 16 gauge type 304 stainless steel
- Tub slopes from 3" D to 4" D at drain to provide positive drainage
- Recessed grate guide allows grate to set flush with the top to provide an even and solid work surface
- Stainless steel grate included
- Available in custom sizes

#300-10 60 1/2" L x 24 3/4" W x 4" D Water-Flo Top
#300-15 48" L x 24 3/4" W x 4" D Water-Flo Top



#300-10

17" Deep Split-Level Drop-In Tub

- Constructed of 16 gauge type 304 stainless steel
- Recessed grate guide allows grate to set flush with the top to provide an even and solid work surface
- Stainless steel grate included
- Available in custom sizes

#300-20 60 1/2" L x 24 3/4" W x 17" split level tub



#300-20

16" Deep Drop-In Tub

- Constructed of 16 gauge type 304 stainless steel
- Recessed grate guide allows grate to set flush with the top to provide an even and solid work surface
- 3/4" radius covers allow for quick and easy clean-up
- Stainless steel grate included
- Available in custom sizes

#300-30 60 1/2" L x 24 3/4" W x 16" D



#300-30

CUSTOM 300-00



Shown here with extended back/side splashes for added wall protection.



Can't find a replacement top for your current cabinetry? Can't find that ideal tub insert? Look no further! Pick up the phone and call one of our experienced design team members.



#100-GI

Grate Inclinator

The TriStar Grate Inclinator is a simple but very useful device. Constructed of solid 1/2" stainless steel bar, the inclinator will have no problem supporting heavy animals. To use, lift grate and place inclinator on the recessed grate guide of the tub. To adjust grate angle, move the inclinator forward or backward. When inclinator is not needed, there is no need to find a place to store it. Flip inclinator over and it is out of the way.

#100-GI Grate Inclinator



#100-48GRT

Stainless Steel Grate Inserts

- 304 type stainless steel grate for TriStar's Wet Prep Tables

#100-48GRT for 48" Tub Insert

#100-60GRT for 60" Tub Insert



#400-50

Removable Exam Tops

- Constructed of 18 gauge type 304 stainless steel
- Available in custom sizes

#400-50 47" L x 21 3/8" W (for 60" table)

#400-51 35" L x 21 3/8" W (for 48" table)



#400-00

Six Drawer Exam Cabinet

- All stainless, heavy duty 18 gauge construction provides for long-lasting durability
- Overall dimensions: 60 1/2" L x 24 3/4" W x 36" H
- Pullout drawer pans remove easily for re-stocking & cleaning
- Available in custom sizes

#400-00 60 1/2" Exam Cabinet with RIGHT knee space

#400-01 60 1/2" Exam Cabinet with LEFT knee space

#400-04 48" Exam Cabinet with RIGHT knee space

#400-05 48" Exam Cabinet with LEFT knee space



#400-02PT

One Door, 3 Drawer Exam Cabinet

- All stainless, heavy duty 18 gauge construction provides for long-lasting durability
- Overall dimensions: 60 1/2" L x 24 3/4" W x 36" H
- Pullout drawer pans remove easily for re-stocking & cleaning
- Available in custom sizes

#400-02 60 1/2" Exam Cabinet with RIGHT knee space

#400-06 48" Exam Cabinet with RIGHT knee space

#400-03 60 1/2" Exam Cabinet with LEFT knee space

#400-07 48" Exam Cabinet with LEFT knee space

#400-02PT 60 1/2" Exam Cabinet with pass-thru drawer system

#400-06PT 48" Exam Cabinet with pass-thru drawer system



#400-00PT

Added pass-thru drawer system

Six Drawer Exam Cabinet with Pass-Thru Drawer System

- The pass-thru drawer system with removable pans allows drawers to pass through from one side to the other, giving versatility to your floor plan

#400-00PT 60 1/2" Exam Cabinet with pass-thru drawer system

#400-04PT 48" Exam Cabinet with pass-thru drawer system



Visit our website to see video

SINKS



“ We are building a new clinic and have had to work with many suppliers. Your service has been head and shoulders above the others. I wish all companies operated at your level.”

– Dr. Eric Stone

Sinks With Form And Function.

From a simple scrub sink to a complex lab area, you'll find exactly what you're looking for with TriStar.

When comparing sinks keep these details in mind:

- Our ability to customize helps you create a space that fits your needs
- Rounded interior corners allows for quick and easy clean-up
- Unique designs like our Fecal Station make it easier for you to practice medicine



SCRUB



#300-35

Single Surgeon Scrub Sink

- 23 1/2" L x 28" W x 16 1/2" H including the back splash
- 3/4" radius corners, approved by the National Sanitation Foundation allow for a quick and easy cleanup
- Constructed of 16 gauge type 304 stainless steel
- Stainless steel wall mounting bracket included
- Counter drop-in scrub sinks also available
- Available in custom sizes
- Faucet sold separately

#300-35 Scrub Sink



#300-55

Double Surgeon Scrub Sink

- 23 1/2" L x 48" W x 16 1/2" H including the back splash
- 3/4" radius corners, approved by the National Sanitation Foundation allow for a quick and easy clean-up
- Constructed of 16 gauge type 304 stainless steel
- Stainless steel wall mounting bracket included
- Available in custom sizes
- Faucet sold separately

#300-55 Double Sink



#300-76

Surgeon Scrub Sink with Counter Top

- Sink dimensions: 24" W x 18" front to back
- 24 1/2" front to back with 6" H back splash
- 3/4" radius corners in sink allow for quick and easy clean-up
- Constructed of 16 gauge type 304 stainless steel
- Stainless steel wall mounting bracket included
- Fluid retaining edge contains spills
- Available in custom sizes
- Faucet sold separately

#300-75 Surgeon Scrub Sink with Counter Top 48"

#300-76 Surgeon Scrub Sink with Counter Top 36"



LIMITED ON SPACE?

NEED A MULTI-USE WORK STATION?

Let us help you design the perfect sink for you and your staff.



FECA & KENNEL PREP



#300-80
Shown with optional faucet

Fecal Station

- 33" x 21 1/2" overall
- 15" L x 15" W x 9 1/2" D Clean sink
- 6" L x 15" W x 5" D Fecal sink with 6" L x 15" W drain board
- Constructed of 16 gauge type 304 stainless steel
- Faucet sold separately
- Available in custom sizes

#300-80 Fecal Station with RIGHT Drain Board
#300-81 Fecal Station with LEFT Drain Board



#300-90
Shown with optional faucet

Fecal Sink

- 24 7/8" L x 22 5/8" W overall
- 17 1/2" L x 11 5/8" W x 5" D Fecal sink with 10 13/16" L x 17 1/2" W drain board
- Constructed of 16 gauge type 304 stainless steel
- Faucet sold separately
- Available in custom sizes

#300-90 Fecal Sink with RIGHT Drain Board
#300-91 Fecal Sink with LEFT Drain Board



#500-20
Shown with optional faucet

Kennel Prep Area Table

- 72" L x 28" W x 36" H overall
- 4" back splash protects wall from water damage
- 20" L x 18" W x 10" D sink (specify sink placement when ordering)
- 48" L x 24" W Under shelf with 1" back splash
- Constructed of 16 gauge type 304 stainless steel
- Raised marine edge contains spills on table top surface
- Will stand up to water exposure
- Available in custom sizes

#500-20 72" L x 28" W x 36" H with sink and under shelf

TABLES



“High praise from a man used to seeing the good and bad in construction, for your dental tub and spiffy lift tables. Thanks again for being awesome.”

– Dr. Magnusson

Maximize the efficiency of your treatment and surgical areas with versatile tables.

A work area this vital and heavily used deserves careful consideration and planning. Input from all staff members is highly recommended. Our tables offer features and options designed with you in mind. Our patented Water-Flo table and pass-thru drawer system are evidence that we think outside the box of traditional design. Important considerations for surgical and treatment tables:

- Wall mount tables that allow you to get up close and personal access to your patients.
- Transport/Lift tables that can smoothly lift and support large dogs with safety features such as restraint rails to protect staff members.
- Patented surgery tables with features that save you time, in turn making your staff more efficient and productive.



WALL MOUNT



#400-28

Electric Hydraulic Wall Mount Wet Lift Table

The Wet Lift Table provides a comfortable working height for everyone who uses it. This dental unit is commonly installed in wet/prep areas but also assists in all types of procedures. The tub insert is designed with a slope to create a positive flow towards the drain. The tub easily accommodates either wall or floor drain systems. Toggle switch control allows operator to elevate or lower patient quickly and easily with smooth and quiet operation. A "No Square Corners" ergonomic design at the work end of the 400-29 provides a comfortable work zone.

- Overall Dims: 63" L x 24" W x 78" H
- Wet Tub surface measures : 54" L x 22" W
- Lifts up to 250 lbs to accommodate patients of any size
- Electric Hydraulic Lift operates with toggle switch and provides smooth, quiet lifting
- Adjustable height from 8" to 42", for varied working heights
- Free Standing Units Available
- Custom sizes available



#400-29

#400-28 Electric Hydraulic Wall Mount Dental Sink
#400-29 Electric Hydraulic Wall Mount Wet Lift

FREE STANDING MODEL



#400-29 is capable of lifting 250 lbs. from a range of 8" to 42", designed with a sturdy base for maximum stability.

INNOVATIVE DESIGN



TriStar offers yet another innovative design by eliminating all square corners at the end of the table. This creates a comfortable and ergonomic work area which allows you and your staff close access to patients.

ABOVE: Two piece stainless steel grate system

WALL MOUNT



#400-26

This ergonomic design saves wear and tear for the users while the heavy gauge construction provides long lasting durability.

Electric Hydraulic Wall Mount Lift Table

- 45" L x 25" W Exam top provides generous surface area
- 38" H back splash for maximum support
- Table height adjusts from 7" to 41" for step on/step off capability
- Constructed of type 304 stainless steel
- Supports a maximum of 250 pounds for even the heaviest of breeds
- Wall mounted design eliminates floor supports
- Nothing in the "toe space" area to kick or trip over
- Quiet & smooth operation creates less stress for patients

#400-26 Electric Wall Mount Exam Table



#400-27

Electric Hydraulic Wall Mount Lift Table with Scale

This wall mount lift table is designed for convenience as well as space saving.

- 45" L x 25" W Exam top provides generous surface area
- 38" H back splash for maximum support
- Table height adjusts from 7" to 41" for step on/step off capability
- Constructed of type 304 stainless steel
- Supports a maximum of 250 pounds for even the heaviest of breeds
- Wall mounted design eliminates floor supports
- Nothing in the "toe space" area to kick or trip over
- Quiet & smooth operation creates less stress for patients

#400-27 Electric Wall Mount Exam Table (includes built in scale)



Lift Table attaches easily to TriStar Island Columns. With a push of a button you can raise or lower the exam surface to a comfortable working height.

Ideal for lifting large dogs to a comfortable working height for any member of your staff.





#400-21

Wall Mount Exam Tables

- 22" x 45" Exam top 18 gauge stainless steel
- Raised marine edge contains spills on work surface
- 1" back splash protects wall from water damage
- Available with pass-thru drawer
- Available in custom sizes

#400-20 Wall Mount Exam Table

#400-21 Wall Mount Exam Table with Pass-Thru Drawer



#400-23

Wall Mount Folding Exam Table

- Folds up to store & down to use
- Exam top constructed of 18 gauge stainless steel
- Raised marine edge contains spills on work surface
- Available in custom sizes

#400-23: 20" x 45" End mount - fold up to store & down to use



#400-24

Wall Mount Folding Exam Table

- Folds up to use & folds down to store
- Exam top 18 gauge stainless steel
- Raised marine edge contains spills on work surface
- Available in custom sizes

#400-24 20" x 35" Side mount - folds down to store & up to use



#400-25

Wall Mount Fold Up Exam Table

- Folds down to store & folds up to use
- 35" L x 20" W Exam top 18 gauge stainless steel
- Raised marine edge contains spills on work surface
- 1" back splash protects wall from water damage
- Available in custom sizes

#400-25 Wall Mount Fold Up Exam Table

TRANSPORT/LIFT & SURGERY



#MT-58SL

Electric Mobile Lift Table

The TriStar Mobile Lift Table has been designed for effortless transport.

- All welded 16 gauge stainless steel tubing and heavy gauge stainless provides stable base for transport
- Double scissor construction provides durability and maximum stability
- Hand held remote lowers to 11 1/2" & elevates to 36" at its highest position
- Fully locking swivel non-marking casters for stationary use
- Fluid Retaining edge is designed to contain spills
- Lifts up to 225 pounds
- Rechargeable battery
- Restraint rail for added safety

#MT-50SL 50" L x 24" W

#MT-58SL 58" L x 24" W



#658E-VT

Electric V-Top Surgery Table

Our electric surgery tables are packed with features and available in custom sizes.

- Adjustable V-top
- Tilt top design with locking capability is easy to operate
- Fluid collecting trough system
- Top constructed of 16 gauge type 304 stainless steel
- Side restraint system with cam cleat tie-downs
- Available in custom sizes
- Raises from 29" to 44"

#658E-VT 58" L x 24" W V-top surgery table



#658E-FT

Electric Flat-Top Surgery Table

- Tilt top design with locking capability is easy to operate
- Fluid collecting trough system
- Top constructed of 16 gauge type 304 stainless steel
- Side restraint system with cam cleat tie-downs
- Available in custom sizes
- Raises from 29" to 44"

#658E-FT 58" L x 24" W Flat-top surgery table

UTILITY & MOBILE

#400-30



22" x 44" Utility Prep Table with 2 Drawers & Under Shelf

- 22" W x 44" L with exam surface at a working height of 36"
- All stainless 16 gauge construction for long lasting performance
- Fully welded under shelf for maximum durability
- Drawers pass-thru to either side to provide versatility
- Available with or with out heavy duty casters
- Available in custom sizes

#400-30 Exam Table
#400-31 Mobile Exam Table

#400-41



22" x 44" Utility Prep Table with 2 Drawers & 2 Under Shelves

- 22" W x 44" L with exam surface at a working height of 36"
- All stainless 16 gauge construction for long lasting performance
- 2 under shelves
- Drawers pass-thru to either side
- Available with or with out heavy duty casters
- Available in custom sizes

#400-40 Exam Table
#400-41 Mobile Exam Table

#400-55



Transport Table

- Table top is constructed of 16 gauge type 304 stainless steel
- Fully welded 16 gauge stainless steel tubing frame for maximum durability
- 44" L x 22" W table top with 36" H working height
- Stable base for safe transport
- Locking casters for stationary use
- Adjustable tie-down cleats provide for safe restraint
- Optional two-hook IV pole
- Available in custom sizes

#400-55 44"L x 22" W

#100-96



Stationary & Mobile Treatment Tables

This is a great item for those on a limited budget or limited on space. This table can be moved from one room to another.

- Standard sloping top with pail hook for bucket
- Available in custom sizes

#100-95 60 1/2" L x 24 3/4" W x 4" Deep (stationary)
#100-96 60 1/2" L x 24 3/4" W x 4" Deep (mobile)

GROOMING



#GT-100

Hydraulic Grooming Table

- Adjustable height: 18" to 38 1/2"
- Table can be either mobile or stationary
- Large 24" x 42" top
- Foot operated, heavy duty hydraulic pump
- Heavy gauge all steel construction
- Recommended load capacity of 175 pounds
- Clear acrylic finger guard protection on lift mechanism

INCLUDES: Post, Clamp & Top

#GT-100 (Top: 24" x 42") x 18"-38 1/2" H



#GT-110

Electric Lowboy Grooming Table

- Adjustable height: 6" to 42"
- Table can be either mobile or stationary
- Super heavy duty enclosed electric jackscrew
- Foot switch for hands free operation
- Large 24" x 42" top
- Recommended load capacity of 250 pounds
- Optional Bellows cover

INCLUDES: Post, Clamp & Top

#GT-110 (Top: 24" x 42") x 6"-42"H



#GT-120

Electric Lowlift Grooming

- Adjustable height: 12" to 42"
- Table can be either mobile or stationary
- Super heavy duty enclosed electric jackscrew
- Foot switch for hands free operation
- Large 24" x 42" top
- Recommended load capacity of 250 pounds

INCLUDES: Post, Clamp & Top, Bellows Cover

#GT-120 (Top: 24" x 42") x 12"-42"H

CABINETS/CASEWORK



“ We loved the cabinets that we purchased at the beginning of the year so much that we decided to do all the cabinets in our treatment room with your products. Great products and great service! Thank you.”

– Janet Culp

A long-lasting option.

Choose casework designed & constructed specifically for your medical environment. Keeping it simple is key. Select cabinets that are customizable to allow you and your staff the ability to get just what you want. When selecting cabinetry, keep the following in mind:

- Steel cabinets are a long-lasting option. They're very durable unlike laminate or wood and are very easy to install.
- Our Wood grain treatment allows you to invest wisely in metal and get the look and warmth of real wood.
- Stainless cabinets with glass fronts help your staff quickly locate necessary items.



CABINETS

You can design your procedure room around your specialty and keep your attention on what is most important, the patient. By choosing TriStar casework you can rest assured that you have invested in cabinets designed & constructed specifically for your medical environment. Keeping it simple is the key. The unique design of this product allows doctors and staff to quickly customize their office space to suit their needs. Our sales people and engineers can help with options such as locking cabinets and pass-thru windows or the all new, all metal wood grain cabinet.



This cabinetry was designed by a Doctor who came to us and said, "Build this." Our goal is to give each customer exactly what they want.



Our modular casework can be worked into most floor plans.





#700-00



#700-05

Double Door Medical Cabinet

- Constructed of 18 gauge 304 stainless steel
- Dimensions are 48" W x 72" H x 12" D
- Four adjustable stainless steel shelves
- Locking doors available
- 1/4" Tempered glass doors
- Available in custom sizes

#700-00 Double Door Medical Cabinet

#700-05 Pass-Thru Double Door Medical Cabinet

CABINETS/
CASEWORK



#700-20

Double Door Medical Cabinet with Base

- Constructed of 18 gauge 304 stainless steel with an overall dimension of 32" W x 72" H x 24" D
- 32" W x 30" H x 12" D double door upper cabinet equipped with 2 adjustable stainless steel shelves
- Locking doors available
- 32" W x 36" H x 24" D stainless steel bottom cabinetry equipped with five pullout drawer pans for easy cleaning and maintenance.

#700-20 Double Door Cabinet and Cabinetry

#700-25 Double Door Cabinet, Cabinetry with Narcotic Safe

MEDICAL

Pass-Thru Medical Cabinet

- Constructed of 18 gauge 304 stainless steel and 1/4" tempered glass
- Upper & Lower cabinets are accessible from either side
- Double door upper cabinet is equipped with 3 adjustable stainless steel shelves
- Locking doors available
- Custom sizes available
- OPTIONAL: Stainless steel trim available when placed into wall (ask for details).



#700-30

#700-30 Pass-Thru Upper & Lower 2 Door Medical Cabinetry

MEDICAL CABINETS



Shown here installed in a surgery room.



TriStar offers this unit in custom sizes. Call us for details.

Pass-Thru Medical Window

- Constructed of 18 gauge 304 stainless steel and tempered glass
- Overall dimension of 36" W x 36" H x 12" D
- 2 stainless steel shelves
- OPTIONAL: Locking doors available
- Available in custom sizes

#700-50 Pass-Thru Medical Window



#700-50

Shown here installed and trimmed out in stainless steel

#700-50TP

Trim Package for Pass-Thru Medical Window

PASS-THRU WINDOWS INSTALLATION



The window finished out with dry wall.



Finished out with a stainless steel frame.

UPPER

Upper Modular Case Work Units

Units match the width of lower case work to provide a symmetrical layout. NSF specified stainless steel medical lift off hinges allow door to open 180 degrees and are removable for routine cleaning. All welds are ground and polished for sanitation.

- Constructed of 18 gauge type 304 stainless steel
- 2 adjustable stainless steel shelves
- Lift off hinges allow doors to be removed for routine cleaning
- Wall mount bracket included
- Sizes 17" W x 30" H x 12" D (single) & 32" wide (double)
- Available in custom sizes



#CW-SU-10
Left or Right Hinge

#CW-SU-20



#CW-GU-10
Left or Right Hinge

#CW-GU-20



#CW-U-10

#CW-U-20

CABINETS INSTALLED



Shown here with exposed shelving



Glass door model shown here



Solid door model shown here

Lower Modular Case Work Units

Units match the width of upper case work to provide a symmetrical layout. NSF specified stainless steel medical lift off hinges allow door to open 180 degrees and are removable for routine cleaning.

- Constructed of 18 gauge type 304 stainless steel
- Lift off hinges allow doors to be removed for routine cleaning
- Sizes 17" W x 36" H x 24" D (single) & 32" wide (double)
- Available in custom sizes



#CW-B-04



#CW-B-08



#CW-B-10
Left or Right Hinge available



#CW-B-11



#CW-B-15



#CW-B-20



#CW-B-22

WORK ISLANDS



I appreciate your working with me on the alterations made to my lift table that allowed me to use it in a limited space. It is a very nice product.

– Dr. Sam McIlvanie

Design around your specialty

A proper work island should allow you to design around your specialty. Ergonomics, configuration, placement and accessories allow your staff to quickly clean and organize and assist so you can make the most out of every procedure. Things to consider when designing a work island:

- Where is the plumbing coming from? (Ceiling or Floor)
- Configuration of door and drawer location? (Accessibility)
- Outlet and plug placements? (Keep Things at Your Finger Tips)
- Working height? (Do you sit most of the time? Are you taller than average?)
- What will make your tasks easier? (Ergonomics)



WORK ISLANDS

A work area this vital and heavily used deserves careful consideration and planning. Input from all staff members is seriously recommended. Ergonomics, configuration, placement and accessories can make your clinic much more efficient.

Things to think about when designing a work island:

- Where is the plumbing coming from? (Ceiling or Floor)
- Configuration of door and drawer location? (Accessibility)
- Outlet and plug placements? (Keep Things at Your Finger Tips)
- Working height? (Do you sit most of the time? Are you taller than average?)
- What will make your tasks easier? (Ergonomics)

If your plans or drawings call for something different, please call our customer service team and discuss it.

All Columns

- Body constructed of 18 gauge type 304 stainless steel
- Most have inner removable panels allowing access to plumbing and wiring (ask for specs)
- Most columns are built 84" H
- No matter if plumbing & electrical components come up from floor or down from ceiling, they are run through the utility chambers and are accessed through removable panels. (Don't worry if your plumbing is already roughed in. We can match it)
- Adjustable shelving allows you to change shelf spacing

Choose

- 1-3 wet/prep cabinets to create work island
- Configure one on your own or call us for help

Optional

- Pass-thru drawer system allows access from either side; add to column, cabinets or both
- Ordering outlets pre-installed is recommended.
- Stainless steel counter sunk floor drains with strainers are installed when concrete is poured, floor drains help prevent clogs due to hair

Standard Column

- Designed to be installed in the middle of your prep area
- Multiple columns (2 to 5 columns with cabinetry) often spaced out in rows to maximize prep area
- Column width can be modified to meet your specifications
- Overall dimensions 28" W x 84" H x 28" L

Includes

- 2 removable inner panels allow access to wiring and plumbing
- 1 upper door storage space
- 1 adjustable shelf
- 1 pull out writing shelf
- 2 storage drawers
- 1 Lower door for plumbing and electrical access

Choose

- Wet/Prep cabinets to create work island
- Consider configuration (which side will doors and drawers be on or choose pass-thru package)

Optional

- Available in custom sizes
- Pass-thru drawer package
- Stainless steel cap (make to size) to close gap from top of column to ceiling
- Electrical and gas outlets placed to your specifications
- Extension available



#CLM-ST (shown with exam tables attached)

WORK ISLANDS

Y-Column

- Designed to be situated in the middle of your prep area and gives 360 degree access
- Column was designed to add space between cabinets where they meet column
- Cabinets are spaced apart to provide enough room for doctors and staff to work side-by-side



#CLM-Y (shown with exam tables attached)

Includes

- Removable top and middle panels allow access to wiring and plumbing
- 12 adjustable shelves
- 1 Lower door for plumbing and electrical access

Choose

- 3 wet/prep cabinets to create work island (Which side will doors and drawers be on or choose pass-thru package)

WORK ISLANDS

H-Column

Column Includes:

Two 28" W x 84" H x 28" L columns that include:

- 2 removable inner panels allow access to wiring and plumbing
- 1 upper door storage space
- 2 adjustable shelves
- 1 lower door for plumbing and electrical access



#CLM-H (shown with exam tables attached)

Center Cabinetry

- Counter top constructed of 16 gauge type 304 stainless steel
- Choose door and drawer configuration
- Optional shelf rack mounted to counter top
- Adjustable shelving allows you to change shelf spacing pass-thru drawer system allows drawer to be accessed from either side
- Outlet such as Electrical, Water, Oxygen, Central-Vac and/or Gas vacuum

Choose

- 1 to 2 wet/prep cabinets to create work island
- Consider configuration (Which side will doors and drawers be on or choose pass-thru package)

Optional

- Available in custom sizes
- Pass-thru drawer package
- Stainless steel cap to close gap from top of column to ceiling
- Electrical and gas outlets placed to your specifications
- Extension available

WORK ISLANDS

Pass-Thru Dry Column

- Pass-thru Dry Prep Column
- This column is a "dry" column there is no plumbing
- Cabinet incorporates the pass-thru drawer system
- Can be modified to meet your specifications
- Overall dimensions 28" W x 84" H x 28" L

Includes

- 2 removable inner panels allow access to wiring and plumbing
- 2 door upper storage cabinet (1 door on either side)
- 1 adjustable shelf
- 1 pass-thru writing shelf
- 2 pass-thru storage drawers
- 2 door lower plumbing and electrical space



Choose

- 1 to 2 wet/prep cabinets to create work island
- Consider configuration (Which side will doors and drawers be on or choose pass-thru package)

Optional

- Available in custom sizes
- Complete pass-thru package or partial pass-thru system
- Stainless steel cap (make to size) to close gap from top of column to ceiling
- Electrical and gas outlets placed to your specifications
- Extension available

Off-Set Column

- Designed to be situated in the middle of your prep area
- Column width can be modified to meet your specifications
- Upper column can be designed with open shelving or with storage cabinets
- Overall dimensions 56" W x 84" H x 28" L

Includes

- 2 removable inner panels allow access to wiring and plumbing
- 4 upper door storage space (2 doors on either side)
- 4 adjustable shelves
- 2 lower storage spaces with plumbing and electrical access



Choose

- 1 to 2 wet/prep cabinets to create work island
- Consider configuration (Which side will doors and drawers be on or choose pass-thru package)

Optional

- Available in custom sizes
- Pass-thru drawer package
- Stainless steel cap (make to size) to close gap from top of column to ceiling
- Electrical and gas outlets placed to your specifications
- Extension available

WORK ISLANDS

LowBoy Column

- Simple column design to hide wiring and plumbing coming up from floor
- Column with can be modified to meet your specifications (i.e. 28" x 28" or as thin as 6" x 28")
- Overall dimensions 28" W x 40" H x 28" L
- Includes pullout writing shelf, 2 drawers & plumbing access door

Optional

- Available in custom sizes
- Pass-thru drawer package
- Stainless steel cap (make to size) to close gap from top of column to ceiling
- Electrical and gas outlets placed to your specifications



CLM- LowBoy

Includes

- 1 Lower door storage space

Choose

- 1 to 2 wet/prep cabinets to create work island
- Consider configuration (Which side will doors and drawers be on or choose pass-thru package)

Choose any of our standard Island designs or let our design team help create one for you



GROOMING TUBS



I was genuinely impressed with everyone at Tristar that I interacted with throughout the entire process. We have been using the tub for several weeks and our employees are very fond of it and customers that have seen it have been impressed. Thank you for a well-made and functional piece of equipment.

– Jim R., Diana's Place Dog Grooming

Functional by design.

TriStar offers a range of functional bathing and grooming products customized to fit the everyday needs of any clinic. When evaluating bathing and grooming equipment, be sure to keep these tips in mind:

- TriStar's patented rotating ramp solves the problem of your staff lifting heavy dogs and the ramp is easily stored underneath the tub.
- Adjustable tubs make it easier for your staff to work on animals of any size.
- High backsplash panels can prevent water damage to surrounding walls.



TUBS



#800-10
Shown with optional faucet

Patented Bathing Tub with Swivel Ramp

U.S. patent #6,516,752

- Outside Dimensions: (59" or 48")W x 64 1/2"H x 28 1/4"D (front to back)
- Constructed of 16 gauge type 304 stainless steel
- Fully welded one piece design ensures against leaks
- Tub design has a built in 1" slope to allow for positive drainage
- Swinging door creates large entry point for larger animals
- High backsplash helps prevent water damage to surrounding walls
- Fully welded tubing underframe provides a very solid base
- Elevated Grate System
- Adjustable stainless steel feet allow for leveling
- INCLUDES: 26 1/2" x 20" HDPE Elevated Grate

#800-00 59" Bathing Tub, RIGHT Plumbing, LEFT Rotating Ramp

#800-02 48" Bathing Tub, RIGHT Plumbing, LEFT Rotating Ramp

#800-10 59" Bathing Tub, LEFT Plumbing, RIGHT Rotating Ramp

#800-12 48" Bathing Tub, LEFT Plumbing, RIGHT Rotating Ramp



#800-HR
Shown with optional faucet



Visit our
website to
see video

Adjustable Height Bathing Tub

60"W x (8"-42"H) x 28 3/4"D

- Easy adjustable working height
 - No ramp needed - Dogs can easily walk into tub
 - Lifts any dog to desired height
 - Electric hydraulic lift tub
 - Constructed of 16 gauge type 304 stainless steel
 - Tub depth is 13"
 - Tub floor adjustable from 8" off the ground to 42" high.
 - Fully welded one piece design ensures against leaks
 - High backsplash design helps prevent water damage to walls
 - Tie-down rail for securing animal
 - Durable underframe w/ bracing provides a very solid base
- * INDICATE FAUCET LOCATION WHEN ORDERING

#800-HL Left Drain

#800-HR Right Drain

TUBS



#800-16
Shown with optional faucet

Tubs with 45 Degree Cut Side Splashes

- Outside Dimensions: (48" or 35 1/4")W x 55"H x 26 5/8"D (front to back)
- Constructed of 16 gauge type 304 stainless steel
- Tub depth is 13"
- Fully welded one piece design ensures against leaks
- High backsplash design helps prevent water damage to walls
- Elevated grate guide system for bathing small animals
- Tie-down rail located on backsplash for securing animal
- Fully welded tubing underframe provides a very solid base
- INCLUDES: 23" x 20" HDPE Elevated Grate
- **indicate faucet location when ordering

#800-15 48" Bathing Tub, 45 Degree Side Splashes & Center Drain

#800-16 35 1/4" Bathing Tub, 45 Degree Side Splashes & Center Drain



#800-17

Tubs with Full Side Splashes

- Outside Dimensions: (48" or 36")W x 58"H x 25 3/4"D (front to back)
- Constructed of 16 gauge type 304 stainless steel
- Tub depth is 12"
- Fully welded one piece design ensures against leaks
- High backsplash design helps prevent water damage to walls
- Elevated grate guide system for bathing small animals
- 3 tie-down d-ring locations for securing animal
- Fully welded tubing underframe provides a very solid base
- INCLUDES: 23 5/8" x 20" HDPE Elevated Grate
- **indicate faucet location when ordering

#800-17 48" Bathing Tub with Center Drain

#800-18 36" Bathing Tub with Center Drain



#800-20

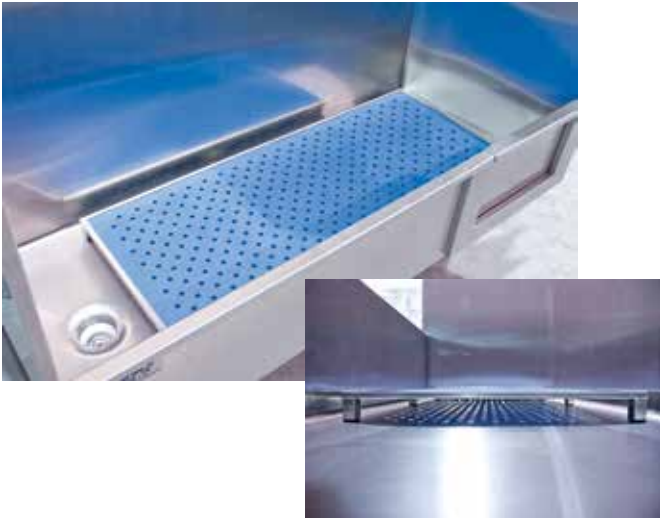
Step-In Bathing Tub

- Constructed of 16 gauge type 304 stainless steel
- Tub depth is 6"
- Fully welded one piece design ensures against leaks
- High splash design helps prevent water damage to walls
- 3 tie-down d-ring locations for securing animal
- Fully welded tubing underframe provides a very solid base
- OPTIONAL: HDPE Raised Grate
- **indicate faucet location when ordering

#800-20 48" Bathing Tub, Full Side Splashes & Center Drain 48"W x 50"H x 28"D

#800-21 36" Bathing Tub, Full Side Splashes & Center Drain 36"W x 50"H x 28"D

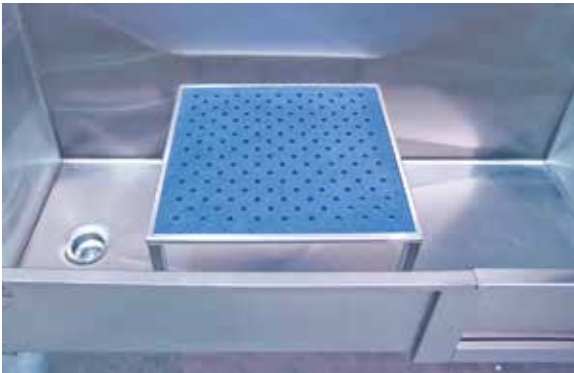
GRATES



Floor Grates

- Grate surface is designed with 0.40 HDPE
- Encased in a stainless steel frame
- Frame is elevated 2"H by stainless steel legs
- Grate surface is perforated with 0.475 holes

#800-00FG 48" x 24" HDPE Floor Grate, Elevates 2"H
#800-02FG 38" x 24" HDPE Floor Grate, Elevates 2"H
#800-10FG 48" x 24" HDPE Floor Grate, Elevates 2"H
#800-12FG 38" x 24" HDPE Floor Grate, Elevates 2"H
#800-15FG 46" x 20" HDPE Floor Grate, Elevates 2"H
#800-16FG 34" x 20" HDPE Floor Grate, Elevates 2"H
#800-17FG 41" x 21" HDPE Floor Grate, Elevates 2"H
#800-18FG 29" x 21" HDPE Floor Grate, Elevates 2"H
#800-20FG 44" x 24" HDPE Floor Grate, Elevates 2"H
#800-30FG 31" x 19" HDPE Floor Grate, Elevates 2"H

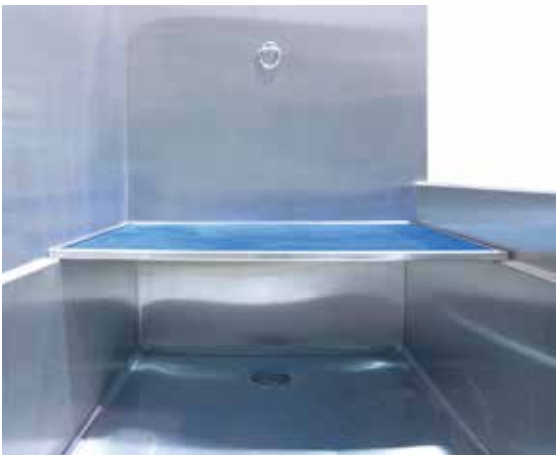


Raised Grates

- Grate surface is designed with 0.40 HDPE
- Encased in a stainless steel frame
- Frame is elevated by stainless steel legs
- Grate surface is perforated with 0.475 holes

#800-30RG 24" x 19" x 9"H HDPE Grate with Stainless Frame & Legs

GROOMING
TUBS



Elevated Grates

- Constructed of 0.40 HDPE
- Encased in a 304 stainless steel frame
- Grate rests on "Elevated Grate Guide System"
- Perforated with .475 hole pattern
- For use on TriStar tubs only

#800-00EG 26 1/2" x 20" HDPE Elevated Grate
#800-02EG 26 1/2" x 20" HDPE Elevated Grate
#800-15EG 23 1/8" x 20" HDPE Elevated Grate
#800-17EG 23 5/8" x 20" HDPE Elevated Grate
#800-25EG 26 1/2" x 20" HDPE Elevated Grate

KENNELS



“Products arrived well packaged & without any damage. All are finally installed & I am very pleased with the quality of the workmanship & the design.”

– G. Bertram, DVM

Built to last.

When you're shopping for boarding equipment, keep the following in mind:

- Quality equipment constructed to reduce bacteria growth and maintain a sterile environment.
- Products designed for ease of cleaning.
- Glass kennel doors provide a luxurious open-boarding look without sacrificing durability.
- Kennel doors that swing both in and out provide your staff with the flexibility and safety needed in dealing with large or aggressive animals.



Premium Door

There are many reasons why the TriStar Premium kennel door will provide your facility with the performance you require.

- 1 1/4" stainless steel tubing is miter cut to create a pleasing aesthetic (Miter-diagonally joined at the corner)
- Stainless steel rods are welded to the bottom frame so urine, water and bacteria will not get trapped inside
- Kennel doors swing both in and out to assist with large or aggressive dogs and to allow kennel runs in narrow areas
- No bottom rail to trip over or trap urine, feces or fur
- Positive spring loaded latch allows one- handed operation & assures door can't be pushed open once closed
- Custom sizes available, great for renovating in existing spaces
- Wall angles to attach doors to block wall included/standard
- Grill door is made up of 1/4" stainless rods that pass through 14 gauge stainless band, Then tack welded to prevent rattling

#1036-KD 35 1/2" W x 75 1/2" H

#1048-KD 47 1/2" W x 75 1/2" H

#1060-KD 59 1/2" W x 75 1/2" H



Rotating Bowl Feeder

A stainless steel panel that rotates 360 degrees. This feature provides easy and safe access to food and water. A self-closing spring latch design makes this feature very easy to operate. This is an option that can be built into any door manufactured by TriStar. Two stainless steel 2 quart bowls included.

#1036-BF





Tempered Glass Door

The TriStar glass kennel door provides a luxurious open-boarding look with out sacrificing durability. Glass provides unobstructed views while ensuring a safe environment.

- 1 1/4" stainless steel tubing frame is miter cut to create a pleasing aesthetic (Miter-diagonally joined at the corner)
- 1/4" tempered glass doors, great for noise control & provides an open boarding feel
- Kennel doors swing both in and out to assist with large or aggressive dogs and to allow kennel runs in narrow areas
- No bottom rail to trip over or trap urine, feces or fur
- Positive spring loaded latch allows one- handed operation & assures door can't be pushed open once closed
- Decorative door handles for luxury boarding appeal
- Custom sizes available, great for renovating in existing spaces
- Wall angles to attach doors to block wall included/standard

#1036-GD 35 1/2" W x 75 1/2" H

#1048-GD 47 1/2" W x 75 1/2" H with side partition

#1060-GD 59 1/2" W x 75 1/2" H with side partition

Tempered Glass Door with Rain Panel

36" high rain panel hides nose prints by distorting the glass, yet creates a sense of openness by allowing light to show through. In addition, it may also provide a sense of privacy when animals are resting. This panel eliminates the need of constantly cleaning the bottom glass door.

See Tempered Glass Door above for specs

#1036-GRD 35 1/2" W x 75 1/2" H

#1048-GRD 47 1/2" W x 75 1/2" H with side partition

#1060-GRD 59 1/2" W x 75 1/2" H with side partition





Stainless Steel Side Panel

- Constructed of 18 gauge 304 stainless steel 1 1/4" square tubing
- 48" H isolation partition is double wall 20 gauge stainless steel sheet metal and is lined with high density foam to reduce noise
- No exposed raw edges to catch hair and dirt
- Side panel fits over a floor mount "U" channel to prevent cross contamination
- INCLUDES: Wall Angle to connect panel to back wall
- Available in custom sizes

#1048-SP 48" W x 75 1/2" H
 #1060-SP 60" W x 75 1/2" H
 #1072-SP 72" W x 75 1/2" H
 #1084-SP 84" W x 75 1/2" H
 #1096-SP 96" W x 75 1/2" H



Starlite Side Panel

- Frame body constructed of heavy duty TYPE 304 stainless steel
- Hand welded and polished
- 1/4" Stainless steel vertical and horizontal rods
- 48" H Isolation partition is a wall of 0.40" HDPE (high density polyethylene)
- INCLUDES: Wall Angle to connect panel to back wall

#1048-SLSP 48" L x 75 1/2" H Starlite Side Panel*
 #1060-SLSP 60" L x 75 1/2" H Starlite Side Panel*
 #1072-SLSP 72" L x 75 1/2" H Starlite Side Panel*
 #1084-SLSP 84" L x 75 1/2" H Starlite Side Panel*
 #1096-SLSP 96" L x 75 1/2" H Starlite Side Panel*

* INDICATE COLOR WHEN ORDERING

KENNELS

STARLITE IS A HIGH DENSITY POLYETHYLENE (HDPE)

- Abrasion Resistant
- Moisture Resistant
- Stain Resistant
- Odor Resistant
- Very Durable
- FDA Approved
- High Impact Strength
- Chemical Resistant

Available Starlite Colors



Blue

Clay

Green

Red

*This is a photographic image and may not reflect exact color due to slight variations in manufacturing.
 PLEASE CALL FOR FREE SAMPLE BEFORE ORDERING

BACK PANELS

STAINLESS STEEL & STARLITE



Stainless Steel Back Panel

- Panel is double wall 20 gauge stainless steel sheet metal and is lined with high density foam to reduce noise
- No exposed raw edges to catch hair and dirt
- Side panel fits over a floor mount "U" channel to prevent cross contamination
- INCLUDES: Wall Angle to connect panel to back wall
- Available in custom sizes
- Panel is designed with cross break for added strength

#1036-BP 35 1/2" W x 75 1/2" H Stainless Steel Back Panel
#1048-BP 47 1/2" W x 75 1/2" H Stainless Steel Back Panel
#1060-BP 59 1/2" W x 75 1/2" H Stainless Steel Back Panel



Starlite Back Panel

- Panel frame is constructed of heavy duty TYPE 304 stainless steel
- Panel is a wall of 0.40" HDPE (high density polyethylene)
- Hand welded and polished

#1036-SLBP 35 1/2" W x 75 1/2" H Starlite Back Panel*
#1048-SLBP 47 1/2" W x 75 1/2" H Starlite Back Panel*
#1060-SLBP 59 1/2" W x 75 1/2" H Starlite Back Panel*

* INDICATE COLOR WHEN ORDERING (See page 41 for color options)

GUILLOTINE

Starlite Back Panel Guillotine Door

The guillotine door is a feature offered in all starlite back panels. The door runs the width the back panel and slides inside of a stainless steel track. A back panel with guillotine door is usually used when you have a back-to-back kennel design. This feature provides easy and safe access to the adjoining kennel.



Open Position

Closed Position



1000-EZCB
Upgraded Counter
Balance & Slides



1000-GDCB
Counter Balance

RAISED

The TriStar raised kennel system is quick and easy to assemble. This system was designed to eliminate the use of brackets and screws. This design prevents urine from leaking into the panels and becoming trapped. A polycoated sub-floor elevates animals out of waste keeping them dry and clean. A stainless steel collection pan directs waste from each kennel to a central drain line.



- Frame and door are constructed of 1 1/4" 18 gauge 304 stainless tubing, this door will not twist or distort
- Designed with out the use of brackets or screws to make assembly quick and easy



Poly-coated subfloor elevates animals up and out of urine



Door swings both in and out



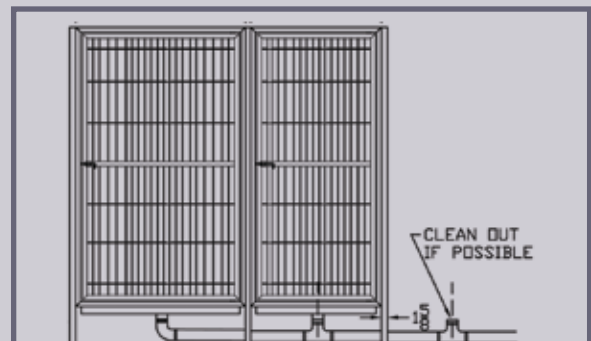
Positive locking latch provides hands free operation



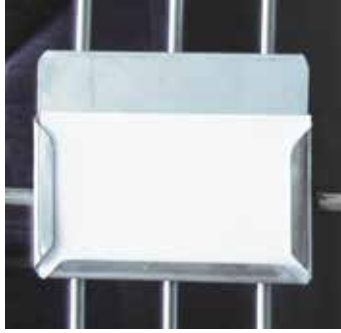
Stainless steel collection pan with drain directs waste from each kennel to a central floor drain



This plumbing can easily be joined together by your plumber. Collection pans in each run can be connected with PVC piping and plumbed to a central sewer line. For more information, contact our design team.



ACCESSORIES



Card Holders

- Constructed of 304 stainless steel
- Attaches to any Kennel or Cage rod door

#CHGD-3x5 3"x5" Glass Door Card Holder
#CHGD-5x7 5"x7" Glass Door Card Holder
#CHRD-3x5 3"x5" Rod Door Card Holder
#CHRD-5x7 5"x7" Rod Door Card Holder

Kennel Mount Infusion Platforms

- Constructed of heavy type 304 stainless steel
- Attachment pole doubles as IV pole
- IV hook included
- Hanger hooks attach to most kennels and cages
- Available in custom sizes

#1000-IP Single Infusion Pump Platform
#1010-IP Dual Infusion Pump Platform

Stainless Steel Resting Bench

- Constructed of 304 stainless steel
- Hinge system enables it to swing up for cleaning

#1036-RB 35 1/2" W x 24" D Stainless Steel Resting Bench
#1048-RB 47 1/2" W x 24" D Stainless Steel Resting Bench
#1060-RB 59 1/2" W x 24" D Stainless Steel Resting Bench

Starlite Resting Bench (Not Shown)

- Stainless steel frame and Starlite surface design
- Hinge system enables it to swing up for cleaning

#1036-SLRB 35 1/2" W x 24" D Starlite Resting Bench
#1048-SLRB 47 1/2" W x 24" D Starlite Resting Bench
#1060-SLRB 59 1/2" W x 24" D Starlite Resting Bench

Starlite Trough Cover

- Stainless steel frame and Starlite surface design
- "Z-Clip" design enables you to lift off cover for easy cleaning

#1036-SLTC 35 1/2" W x 12" D Starlite Trough Cover
#1048-SLTC 47 1/2" W x 12" D Starlite Trough Cover
#1060-SLTC 59 1/2" W x 12" D Starlite Trough Cover

Stainless Steel Trough Cover (Not Shown)

- Constructed of 304 stainless steel
- "Z-Clip" design enables you to lift off cover for easy cleaning

#1036-TC 35 1/2" W x 12" D Stainless Steel Trough Cover
#1048-TC 47 1/2" W x 12" D Stainless Steel Trough Cover
#1060-TC 59 1/2" W x 12" D Stainless Steel Trough Cover

Kennel Roof Enclosures

- Constructed of heavy duty stainless steel

#1000-RE * CALL FOR SIZES AND PRICING



CAT CONDOS



As unexpected delays occurred on the project my sales rep was nothing but professional and patient. I hope to be involved in more projects requiring the products offered by TriStar Vet.

– Shana Parks, Master Contractors of VA, Inc.

Custom Configurations & Maximum Durability

When it comes to cat boarding comfort, versatility and durability are paramount. It is important to provide a safe, separate boarding option that allows cats to climb, perch and lounge and promote easy cleaning, maneuvering and long lasting performance. When shopping for kitty condos keep the following in mind:

- Custom configurations meeting all the latest guidelines for feline safety and comfort
- Maximum durability for many years
- Kitty comfort and versatility
- Easy maneuvering
- Cat condos that ship fully assembled



POWDER COATED

The TriStar Cat Condo is constructed of heavy duty steel which is then powder coated. Powder coating is a type of electrostatic coating. The coating creates a hard finish that is durable, very resistant to scratches, cracking, peeling and UV rays, and is available in over 100 color options.

Triple Stacked Cat Condos



Cat Condos

- Powder coated steel available in over 100 colors
- Elevated resting platform
- Side pass-thru portal allows horizontal movement
- Floor pass-thru portal allows vertical movement
- Urine retaining lip helps prevent fluids from leaking into surrounding areas
- 1/4" Tempered glass back
- 4" double ball bearing casters
- Stainless steel doors will not sag

29"W x 78"H x 29"D Condos with 3 Enclosures

#1200-31 Left Unit, Triple Stacked, Tempered Glass Back
#1200-34 Center Unit, Triple Stacked Tempered Glass Back
#1200-37 Right Unit, Triple Stacked Tempered Glass Back

Double Stacked Cat Condos



29" W x 59" H x 29" D Condos with 2 Enclosures

Enclosures (inside dimensions) 27" W x 26"H x 29"D

#1200-21 Left Unit, Double Stacked, Tempered Glass Back
#1200-24 Center Unit, Double Stacked Tempered Glass Back
#1200-27 Right Unit, Double Stacked, Tempered Glass Back



Kitty Litters

- Powder coated steel
- Side pass-thru portal allows horizontal movement into litter area
- Storage area above litter area
- Urine retaining lip helps prevent fluids from leaking into surrounding areas
- 4" double ball bearing casters
- Over 100 colors to choose from for cat condos
- Ideal for animal control facilities

#1200-28 Double Stack Kitty Litter Left Unit
#1200-29 Double Stack Kitty Litter Right Unit
#1200-30 Double Stack Kitty Litter Center Unit

#1200-38 Triple Stack Kitty Litter Left Unit
#1200-39 Triple Stack Kitty Litter Right Unit
#1200-40 Triple Stack Kitty Litter Center Unit



Don't forget to add Card Holders to your order.
(see page 44 for details)

STAINLESS STEEL



The new TriStar cat condo is designed to meet the needs of the modern animal care facility and will last for many years to come.

Stainless Steel Cat Condo (Triple Stacked with litter area)

- Constructed of 18 gauge type 304 stainless steel
- 3/4" radius corners provide for easy cleaning and disinfecting
- Elevated resting platform
- Litter box shield to hide litter box from the viewing side
- Side-to-side pass-thru to litter area
- Up and down pass-thru is raised to prevent fluids from spilling into bottom enclosure
- Latch can be pad locked for secure containment
- Heavy duty non-marking casters
- Available with tempered glass doors

#1200-50 Overall dimensions 38" W x 78" H x 29" D
Cage dimensions 24" W x 24 3/4" H x 29" D
Litter dimensions 14" W x 24 3/4" H x 29" D



Pass-thru is raised to prevent fluids from spilling into lower enclosure



Side-to-side pass-thru to litter area

Stainless Steel Cat Condo (Double Stacked with litter area and storage)

- Constructed of 18 gauge type 304 stainless steel
- 3/4" radius corners provide for easy cleaning and disinfecting
- Elevated resting platform
- Litter box shield to hide litter box from the viewing side
- Up and down pass-thru is raised to prevent fluids from spilling into bottom enclosure
- Latch can be pad locked for secure containment
- Heavy duty non-marking casters
- Designed to provide extra storage
- Available with tempered glass doors

#1200-55 Overall dimensions 38" W x 78" H x 29" D
Cage dimensions 24" W x 24 3/4" H x 29" D
Litter dimensions 14" W x 24 3/4" H x 29" D

CAT
CONDOS



Luxury Cat Runs

Cats like to climb, perch and lounge and these luxury cat runs are ideal for cat parents seeking the ultimate boarding experience so why not give them what they're looking for and let your facility reap the benefits. Not only will our cat runs last for years they will continue to look brand new with minimal maintenance. Our cat runs are made to your specifications so getting just the right size is a given. They're roomy enough for complex cat furniture and offer felines the space they need to explore.

CAGES



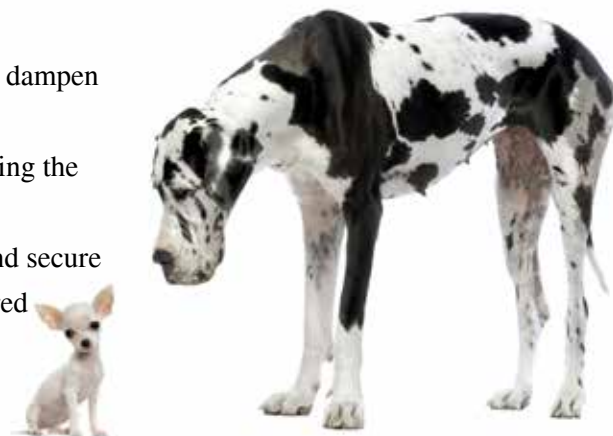
I'm so happy with my product and all the service I received. Everyone was great. Bryan, thanks for your patience.

– Brenda, Prim & Trim Pet Grooming

Our cages pass the smell test.

Our 'clean' cages were designed for complete cleanability so your clinic will always pass the smell test. Keep in mind the following:

- Lift off hinges allow doors to completely lift off for easy, complete cleaning
- Collection tray allows you to clean the cage even while in use
- The lower the gauge, the more heavy duty the stainless
- 18 gauge stainless cages are heavier than industry standard and help dampen sound, decreasing animal anxiety
- Fully welded cages resist leaks and provide years of durability, making the most of your investment
- Easy maneuverability, locking casters allow you to roll into place and secure
- Our cages ship fully assembled, no time consuming assembly required



RECOVERY

The TriStar Clean Cage unit allows you to quickly clean each enclosure. A perforated subfloor elevates animals and allows for drainage of fluids. Waste material drains into a removable collection pan and allows your staff to clean with out removing the patient.



#1600-2424

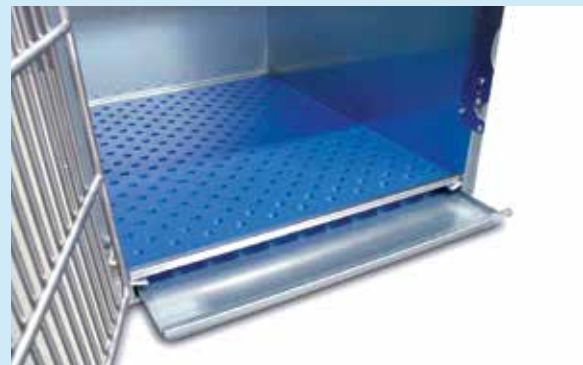
Cage Bank Trim

- #1600-TP Top Panel
- #1600-REP Right End Panel
- #1600-LEP Left End Panel

- Constructed of durable 18 gauge type 304 stainless steel
- All welds are hand polished to achieve a beautiful aesthetic
- Stainless steel doors lift off for thorough cleaning
- Perforated sub-floor allows fluids to drain down into collection pan
- Collection tray allows you to clean cage even while in use
- Collection tray allows for removal of pan with out opening cage door
- OPTIONAL: Glass doors Available

- #1600-2424 24"W x 24"H x 28"D Stainless steel cage
- #1600-2430 24"W x 30"H x 28"D Stainless steel cage
- #1600-3030 30"W x 30"H x 28"D Stainless steel cage
- #1600-3630 36"W x 30"H x 28"D Stainless steel cage

REMOVABLE FLOOR GRATE & WASTE PAN



#1600-4836D

Shown here with optional mobile base

The following cages are designed with you and your staff in mind. We have eliminated the center bracing bar that is problematic when trying to place a large patient into an enclosure. The design is very similar to a French door design. These enclosures are also offered with a divider panel that, when inserted, create two separate enclosures for smaller patients.

- Constructed of durable 18 gauge type 304 stainless steel
- No center bar - great for large or recovering patients
- All welds are hand polished to achieve a beautiful aesthetic
- Stainless steel doors are designed with lift off hinges
- Perforated sub-floor allows fluids to drain down into collection pan
- Collection tray allows you to clean cage even while cage is in use
- Collection tray allows for removal of pan with out opening cage door
- OPTIONAL: Glass doors available
- OPTIONAL: Mobile stainless steel base

- #1600-4830 48"W x 30"H x 28"D Stainless steel cage
- #1600-4830D 48"W x 30"H x 28"D Stainless steel cage with divider panel
- #1600-4836 48"W x 36"H x 28"D Stainless steel cage
- #1600-4836D 48"W x 36"H x 28"D Stainless steel cage with divider panel
- #1600-MB 48" x 28" Stainless steel mobile base

RECOVERY

The TriStar cage system provides the important features every animal hospital needs. These features help in maintaining a sanitary environment and helps lower the “stress factor” involved in the daily maintenance of caring for the patient. A NEW feature is a recessed shelving platform which provides a stable and protective area to place delicate and life saving equipment. We eliminated the center bracing bar that becomes problematic when trying to place a large patient into the enclosure. The design is similar to a French door design. This enclosure can also be separated into 2 smaller units with an optional divider panel.

#1300-20

Protective
Recessed
Shelving
Platform →

Stainless Steel →
Mobile Base



↑
No Center Rail

Mobile ICU Recovery Unit

- Overall dimensions 48"W x 71"H x 28"D
- Top Enclosure: 24" W x 24" H x 28" D
- Bottom Enclosure size 48" W x 31" H x 28" D
- Constructed of type 18 gauge type 304 stainless steel
- Removable perforated subfloor elevates patient
- Protective recessed shelving platform
- DCO electrical outlet included
- Available in custom sizes

#1300-20 Mobile ICU Recovery Unit

TITAN Series Cages

This powerhouse is made from 18GA stainless steel, the heaviest weight in the animal care industry. The TITAN effortlessly absorbs sound and provides firm flooring, ensuring this cage lives up to it's name. Add a urine retaining edge and some covered corners for easy cleaning and your opinion on cages is getting ready to change, forever.

- Constructed of heavy type 304, 18GA stainless steel
- 12 Ga. Super duty slam latch for one handed closure
- 16GA stainless steel door hinges counteract sagging doors
- Fully welded design resists leaks and provides added durability
- All stainless steel fasteners so rust is never a concern
- Latch has can pad locked for added safety
- Urine retaining edge contains spills, keeping floors and surrounding cages clean
- Lift off hinges allow door to completely lift off for complete cleaning
- All edges are ground and polished for a safe, smooth finish

Options

- Top and side trim packages available to achieve a finished look
- Mobile base constructed of 1 ¼" stainless tubing on locking casters



All cages 27" Deep, [Left or Right side hinge], Optional: {Divider}

#TITAN:1500-2424[L or R] 24"W x 24"H

#TITAN:1500-2430[L or R] 24"W x 30"H

#TITAN:1500-3024[L or R] 30"W x 24"H

#TITAN:1500-3030[L or R] 30"W x 30"H

#TITAN:1500-3630[L or R] 36"W x 30"H

#TITAN:1500-3636[L or R] 36"W x 36"H

#TITAN:1500-4830{D} 48"W x 30"H, Double Door, No Center Post {Starlite Divider}

#TITAN:1500-4836{D} 48"W x 36"H Double Door, Not Center Post {Starlite Divider}

#TITAN:1500-48MB 48" x 27" Stainless Steel Mobile Base

#TITAN:1500-60MB 60" x 27" Stainless Steel Mobile Base

#TITAN:1500-72MB 72" x 27" Stainless Steel Mobile Base

ISOLATION

The TriStar double stacked Isolation Unit has been designed to assist your practice by providing quality care and sanitation. Each enclosure has a removable stainless perforated subfloor and collection pan that slopes to a 2" drain. Both drains are easily plumbed into your existing plumbing. Each enclosure is equipped with a variable speed exhaust fan to evacuate fumes. Additionally, an optional heavy duty 96" spray hose can be mounted on either side of the unit to provide a water source for easy cleanup. Tempered glass doors provide easy viewing of patients, as well as contain any discharges that may occur.



#1400-20

Isolation Unit

- Overall dimensions 29 1/2" W x 77 1/2" H x 31" D
- Enclosure size 25" W x 25" H x 29" D
- Constructed of type 304 stainless steel
- Tempered glass doors for easy viewing
- Removable stainless steel perforated subfloor elevates patient
- Collection pan slopes and drains that are easily plumbed
- Variable speed fan evacuate fumes
- Available in custom sizes

#1400-20 Double Stacked Isolation

Don't forget to add Card Holders to your order.
(see page 44 for details)





#1400-10

Parvo Cage

The TriStar parvo cage is constructed of 16 gauge type 304 stainless steel. This material will provide a sanitary environment for the most infectious diseases. Our parvo unit has a raised floor, splatter guard and fluid retaining lip. These features combine to create a safe and sanitary system for collecting and disposing of infectious fluids.

- Overall dimensions 38 1/2" W x 45 1/2" H x 32" D
- Enclosure size 36" W x 27" H x 32" D
- Constructed of type 304 stainless steel
- Removable perforated subfloor elevates patient
- Stainless steel drain is easily plumbed
- Removable splatter guard for easy cleaning
- Available in custom sizes

#1400-10 Parvo Cage



#1400-15

Double Stacked Parvo Cage

- Overall dimensions 38 1/2" W x 73 1/4" H x 32" D
- Enclosure size: 36" W x 27" H x 32" D
- Constructed of type 304 stainless steel
- Removable perforated subfloor elevates patient
- Stainless steel drain is easily plumbed
- Removable splatter guard for easy cleaning
- Available in custom sizes

#1400-15 Double Stacked Parvo Cage

FAUCETS & SCALES



“Your prices were great and the workmanship far surpassed the others at the show. We all forget how important customer service is and also the entrepreneurial spirit. I prefer to deal with these people because they work so very hard and produce great products and relationships with their clients.”

– Jean Daniels

Everything for the routine and extraordinary.

The smallest details can make the biggest difference in your clinic. Here are a few things to consider when shopping for all the extras:

- Durable faucets designed for heavy use help prevent untimely leaks and frequent replacements.
- Infrared faucets free up your staffs' hands and saves time on cleaning later.
- Corner guards can help prevent cosmetic damage to your clinic walls.
- Customer service. Faucet kits will require replacement parts so ask how replacements and warranty are handled up front.



FAUCETS & SCALES

Treatment Faucets



Water-Flo

- Deck Mount 8" Swing Spout with Single Lever Shut-Off Valve, Vacuum Breaker, Water-Flo Mixing Valve, Dual Temperature Control and 96" Stainless Steel Flex Hose

#TS100-WF



Non Water-Flo

- Deck mount (8" center) faucet with 10" Goose Neck, 96" Stainless Steel Flex Hose and Sprayer

#TS-100

Scrub Sink Faucets



Wing Handle

- Wall Mount (8" center) Faucet with 8" Swivel Gooseneck and Wing Handles

#451KN8008WH



Infrared Wall Mount

- Wall Mount infrared faucet w/ 6" gooseneck spout. Battery operated. No transformer required. Ideal for retrofit and easy to install.

#5EF-1D-WGB

- Wall Mount infrared faucet w/ 6" gooseneck spout. AC adapter. No transformer required. Ideal for retrofit and easy to install.

#5EF-1D-WGA

FAUCETS & SCALES



Hands Free

- Wall Mount Rigid 8" gooseneck (used in conjunction with B-0475 or B-0507)

#B-0535MOD129X



Knee Action Valve

- Heavy duty cam acting stirrup. Valve will remain in set position for hot, cold or mix water.

#B-0475



Foot Action Valve

- Self closing valve. Rough chrome body w/ highly polished chrome foot pedals.

#B-0507

Fecal Faucets



Fecal

- 8" Center Faucet for Fecal Sink with 8" Gooseneck and 48" Vinyl Spray Hose and Thumb Sprayer

#B-1172-TS

Utility Faucets



Utility

- Wall mount (8" center) pre-rinse faucet with wall bracket. Assembled is approximately 38" high.

#KN53-1000-BR

- Deck Mount (8" center) pre-rinse with wall bracket. Assembled is approximately 38" high.

#KN60-1000-BR

FAUCETS & SCALES

Grooming Tub Faucets



4" Center

- Wall mount (4" center) spray with vacuum breaker and 48" stainless steel flexible hose

#K45-3100-VB48

- Wall mount (4" center) spray with vacuum breaker and 72" stainless steel flexible hose

#K45-3100-VB72

- Wall mount (4" center) spray with vacuum breaker and 108" coil hose

#K45-3101-V108



8" Center

- Wall Mount (8" Center) utility spray w/ vacuum breaker.

#KN53-2000-SP7 72" Stainless Steel hose
 #KN53-2000-SP8 72" Light Weight Hose
 #K53-PG-8WREV 108" Coil Hose



Light Weight Hose

- Sprayer/hose kit: 72" long Heavy duty yet light weight hose with quick disconnect, shut-off valve and showering spray head.

#DHK-72



Catch All Hair Trap

- Catch All Hair Trap is designed with a removable end-cap that unscrews by hand. Inside of trap is a strainer that collects hair and debris. To clean, simply unscrew and shake out strainer, then replace. This trap is used in place of a typical P-trap and in most cases it can replace your existing hair trap. Can be used with bathing tubs, wet/prep cabinets, sinks, and more.

#K-1701

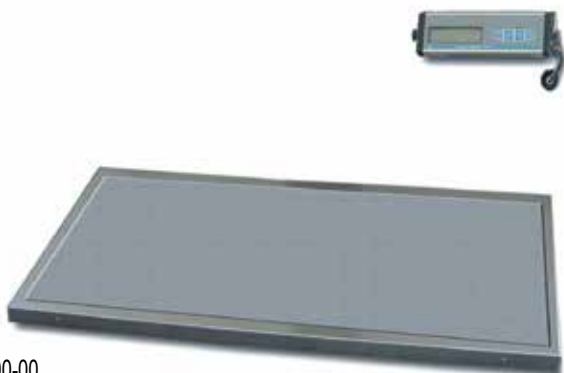


Basket Drain

- Stainless steel duo basket drain with nut, gasket and sealing washer

#Basket-Drain

FAUCETS & SCALES



#1500-00

Floor Scale

- 4 load cells ensure accurate & reliable readings
- Easy to operate
- Compact & light weight
- "HOLD" feature
- Internal battery or AC powered
- Auto power off
- 500 pound capacity
- Platform dimensions 42" L x 22" W
- Includes digital read out, stainless steel top & rubber mat

#1500-00 42" x 22"



#1500-20

Feline Scale

- Accurate & reliable readings
- Easy to operate HOLD feature
- Compact & light weight
- Internal battery or AC powered
- 44 pounds / 20 kilograms
- Includes battery or AC power pack

#1500-20 20" x 12" x 2 1/2"



#1500-30

Equine Scale

- Capacity is 3,000 pounds
- The scale is large enough to avoid making animals skittish while weighing, low profile
- Hold function for single user weighing, easy to use hold feature enables the scale to capture the weight and retain while you tend to the animal
- Protective matting for ease on animal hooves
- Battery operation for remote locations, full function with no AC power attached. AC adapter is included for charging or full time operations. Detachable indicator for battery charging
- Includes AC adapter

#1500-30 40" W x 80" L x 4" H

CORNER GUARDS & KICK PLATES

You've spent time and money creating your dream clinic. Protect vulnerable areas like corners and doors that are the first to show signs of age with stainless steel trim pieces, corner guards and kick plates. These pieces not only protect your investment, they can help your facility look high-end and professional.

“

One of the best qualities Tristar Metals has is their ability to customize in any situation. I think we have one of everything they make, and we know it's built to last!

”

– Dr. Sheila



Stainless Steel Corner Guards

#4890-CG 2" L x 2" W x 48" H x 90 Degree Corner Guard
#7290-CG 2" L x 2" W x 72" H x 90 Degree Corner Guard
#4845-CG 2" L x 2" W x 48" H x 45 Degree Corner Guard
#7245-CG 2" L x 2" W x 72" H x 45 Degree Corner Guard



Kick Plate

- 36"W x 30"H Stainless Steel Door Kick Plate (custom sizes available)

#KP-3630 36"W x 30"H

LIMITED WARRANTY

TriStar Metals, Inc. warrants to the initial purchaser only, of products manufactured by TriStar Metals, Inc. that such products are free from defects in materials or labor for a period of one year. Only those stainless steel products manufactured by TriStar Metals, Inc. are covered under warranty. Products sold but not manufactured by TriStar will be covered by the products' manufacturer's warranty.

The warranty period shall run one year from the date of delivery to the customer. If within the applicable warranty period a product proves to be defective as described herein, TriStar Metals, Inc. will repair or re-place the product, at TriStar Metals, Inc. sole discretion, conditional upon: (1) customers written notice of the defect within 30 days after discovery of defect; (2) evidence of customers status as initial purchaser; and (3) details of defect. Upon receipt of all of the above, TriStar Metals, Inc. will advise customer whether TriStar Metals, Inc. plans to repair or replace defective product. Any alterations or modifications provided by 3rd party without TriStar's written permission will void the Limited Warranty.

In the event TriStar Metals, Inc. product(s) were purchased via an authorized TriStar Metals, Inc. distributor, the authorized distributor shall not be recognized as the initial purchaser. In this instance the "end user" will be recognized as the initial purchaser. In addition, all warranty issues shall be conducted via an authorized distributor.

TriStar Metals, Inc. obligation is solely limited to repair or replacement of defective product and under no circumstances shall TriStar Metals, Inc. be liable for transportation to or from TriStar Metals, Inc. facility or any other expense associated with this limited warranty.

This warranty does not apply to normal wear and tear, improper or insufficient maintenance, routine maintenance (such as need to replace sealant), or damage caused by accident, negligence, improper operation or the use of corrosive agents.

LIMITATION OF LIABILITY

TriStar Metals, Inc. shall not be held liable, under any circumstances, to purchaser or any entity for damages based on lost sales or profits, delay, product failure, work stoppage or any other damages arising out of breach of warranty, breach of contract, negligence, or otherwise.

TriStar Metals, Inc. liability for any and all losses and damages shall not exceed the original purchase price of the product upon which liability is established.

TriStar Metals, Inc. reserves the right to modify products, dimensions or the Limited Warranty at any time without notice.

TRISTARVET.COM
877-459-7827